



18 Old Oak Common Lane
Acton
London
W3 7EL
T 020 8749 9798
E sales@churchillmathesons.com
www.churchillmathesons.com

Churchill & Mathesons

East Acton Lane, London, W3 7HU

£438 Per Week



KEY FEATURES:

- Spacious 1 bedroom flat
- Open plan reception leading to Balcony
- South Facing
- FURNISHED/UNFURNISHED ~ AVAILABLE NOW
- Ealing Council, Council Tax Band D
- EPC Rating: B

An unique opportunity to rent this spectacular and brand new 1 bedroom flat located on the 5th floor in this iconic building in Acton built by Barratt Homes

Spacious 1 bedroom flat

Modern fully fitted kitchen with integrated appliances

Open plan reception room with balcony doors opening to balcony

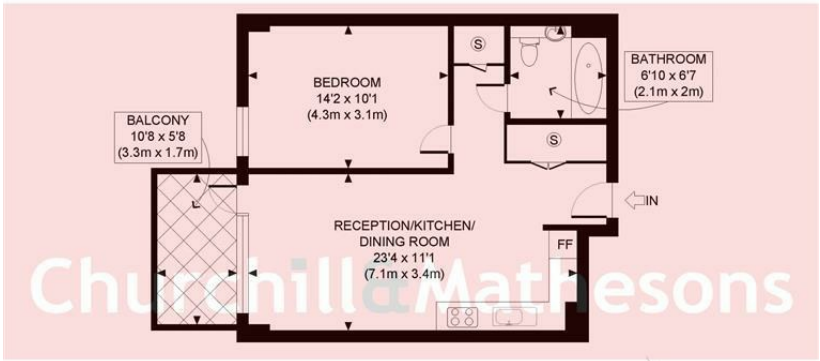
Stylish bathroom

Excellent location with an array of transport links

FURNISHED/UNFURNISHED ~ AVAILABLE NOW

Ealing Council, Council Tax Band D

EPC Rating: B



FIFTH FLOOR
GROSS INTERNAL
FLOOR AREA 533 SQ FT

APPROX. GROSS INTERNAL FLOOR AREA: 533 SQ FT/ 50 SQM

PROPERTY PHOTO PLANS.CO.UK
ONE STOP SHOP FOR PROPERTY MARKETING

This plan is for illustrative purposes only and should be used as such by any prospective client. Whilst every attempt has been made to ensure the accuracy of the Floor Plan contained here, measurements of the doors, windows, rooms and any other items are approximate and no responsibility is taken for any errors, omissions, or misstatement. The services, systems and appliances shown have not been tested and no guarantee as to the operability or efficiency can be given.

Energy Efficiency Rating

	Current	Potential
Very energy efficient - lower running costs		
(92 plus) A		
(81-91) B	84	84
(69-80) C		
(55-68) D		
(39-54) E		
(21-38) F		
(1-20) G		
Not energy efficient - higher running costs		
England & Wales	EU Directive 2002/91/EC	

Environmental Impact (CO₂) Rating

	Current	Potential
Very environmentally friendly - lower CO2 emissions		
(92 plus) A		
(81-91) B		
(69-80) C		
(55-68) D		
(39-54) E		
(21-38) F		
(1-20) G		
Not environmentally friendly - higher CO2 emissions		
England & Wales	EU Directive 2002/91/EC	



Whilst every effort is made to give a fair description, the accuracy of these particulars is not guaranteed, neither do they constitute an offer or contract.

CHURCHILL & MATHESONS ESTATE AGENTS have not tested any apparatus, equipment, fitting or services and so cannot verify that they are in working order. The buyer is advised to obtain verification from their solicitor or surveyor. Measurements are correct to within +/-6 A sonic tape is used. None of the statements contained in these particulars or any of our properties are to be relied upon as a representation of fact.